

CAME

CAME Connect for Home Automation Systems

CAME  **NNECT**
CLOUD CONNECTED TECHNOLOGY

FA00381-EN



P

User Manual

EN

English

GENERAL INFORMATION

CameConnect is the technology that enables compatible CAME devices or systems to be controlled remotely.

Once registered, owners can connect to their systems securely and manage operation remotely.

Registered users can, for example, remotely control a home automation system, a security control unit, manage openings and automation, view images recorded by the cameras in the CCTV system, answer video entry system calls etc... all using their smartphones or tablets.

CameConnect can be reached at the following URL: <http://www.cameconnect.net/>. In order to use the services offered by CameConnect, system owners must register on CAMEConnect.

Registering with CAMEConnect

Registration

rossipaolo

Paolo Rossi

05/06/1968

Male

rossipaolo@gmail.com (+39) 327 5749874_

Via Giuseppe Verdi, 13, Fiume Veneto, 33080 Province b/f

Via Giuseppe Verdi 13

Fiume Veneto PN

Italy 33080

I want to receive news and special offers

I agree with [Privacy](#)

I agree with [Terms and Conditions](#)

Register 1

Otherwise return to LOGIN page ←



This icon identifies the services dedicated to Private Users and directs to the registration window.

For home automation and security systems, however, there is no distinction between Private Users and Installer Users. The user that registers the system automatically has total control over permission to access the system and its features.

Choose your username and password carefully, because they will be the credentials required each time you access the CAMEConnect portal and the apps available for remote management.

After filling in all fields on the form, press the button **1** to finish the registration process.



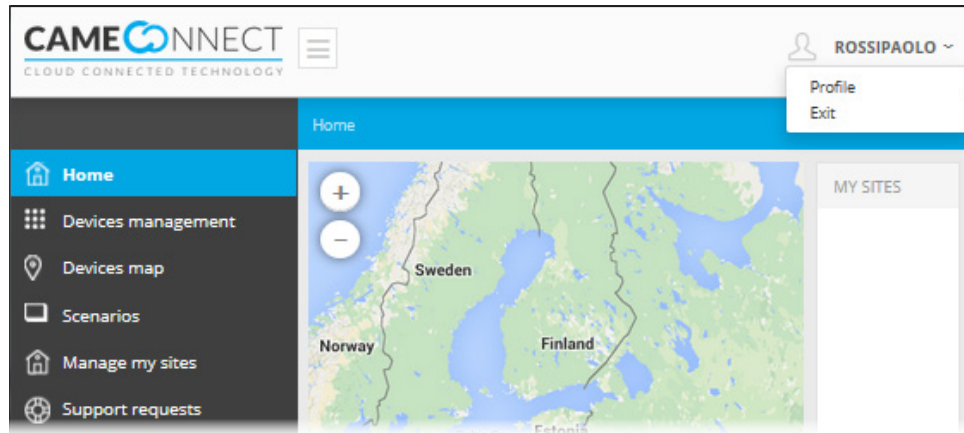
A welcome message confirms registration and allows you to access the portal with your Private User credentials.

CAME CONNECT FOR HOME AUTOMATION SYSTEMS

CAME Connect users can:

- Manage their profiles
- Register one or more systems on their own CAME Cloud space
- Enable remote control of the devices controlled by their systems
- Delegate the use of their devices to other CAMEConnect users
- Enable suitably trained users (qualified installers) to access their systems to perform maintenance, management or reprogramming

Profile management



The name of the logged-in user is always visible in the top right-hand corner of the portal. By clicking in this area, users can access profile configuration options or log out.

PROFILE DATA

Username <input type="text" value="rossipaolo"/>	Gender <input type="text" value="Male"/>
First name <input type="text" value="Paolo"/>	Last name <input type="text" value="Rossi"/>
Birthdate <input type="text" value="5/6/1968"/>	
Email address <input type="text" value="rossipaolo@gmail.com"/>	Telephone number <input type="text" value="(+39) 347 8765432_"/>
Search your address <input type="text" value="Via Martiri della Libertà, 15, Dossina"/>	
<input type="text" value="Via Martiri della Libertà"/>	<input type="text" value="15"/>
<input type="text" value="Casier"/>	<input type="text" value="TV"/>
<input type="text" value="Italia"/>	<input type="text" value="31030"/>
<input type="text" value=""/>	<input type="text" value=""/>
Actually your technician is: Technician not set	
Change your technician <input type="text" value=""/> <input type="button" value="Search by code"/>	

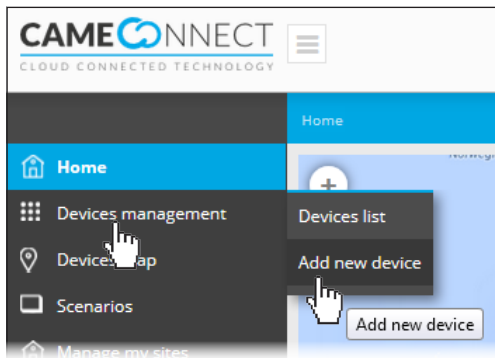
The window shows the profile data entered at the time of registration. This data can be changed at any time by the logged-on user.

- 1 By filling in this field, the system geolocates the address and automatically completes the subsequent fields.
- 2 If you want to change your password, fill in these fields again. If the changes to the profile do not affect the password, the fields can be left empty.
- 3 Do not fill in (section reserved for enabling home automation system installers).

CAME Connect communicates with CAME devices or systems via internet. Each type of system requires a device (gateway) that makes it possible to connect the system to the network.

For CAME home automation systems, the gateway required is ETI/DOMO.

⚠ Before proceeding, you need the identification code (keycode) printed on the gateway label.



Add a device using the menu on the left-hand side of the home page.

Registering a home automation gateway



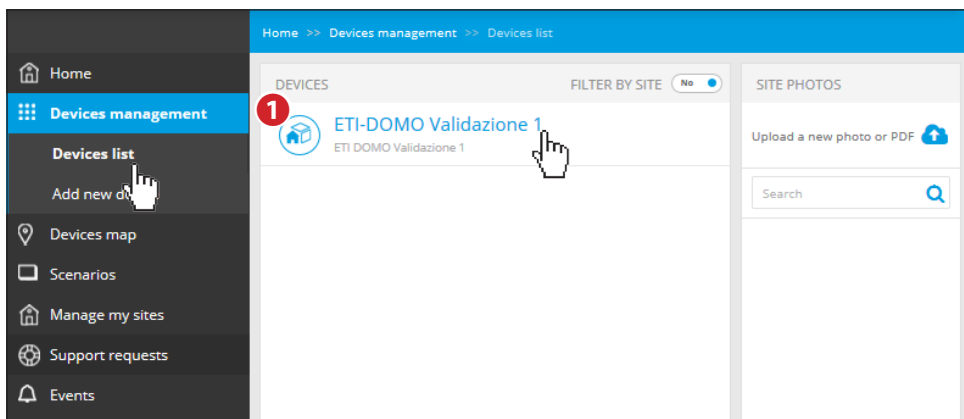
1 The button enables you to add a gateway to the list of paired devices managed by the user.

Fill in the gateway properties window as follows:

- 2** Enter the keycode on the label affixed to the gateway.
- 3** Choose a name to assign to the gateway for easy recognition.
- 4** Optional additional description.

Save the configuration and wait for the pop-up confirming successful gateway configuration.

Configuration options for the home automation gateway



1 Once registered, the gateway populates the list of registered devices.

 The device is working properly.  The device is configured but not available (offline).

 Home automation gateway,  security gateway,  automation gateway.

To access the configuration options, select the name of the newly-added device.

2 General information on the device and CAMEConnect registration status.

3 Name of the user who registered the gateway.

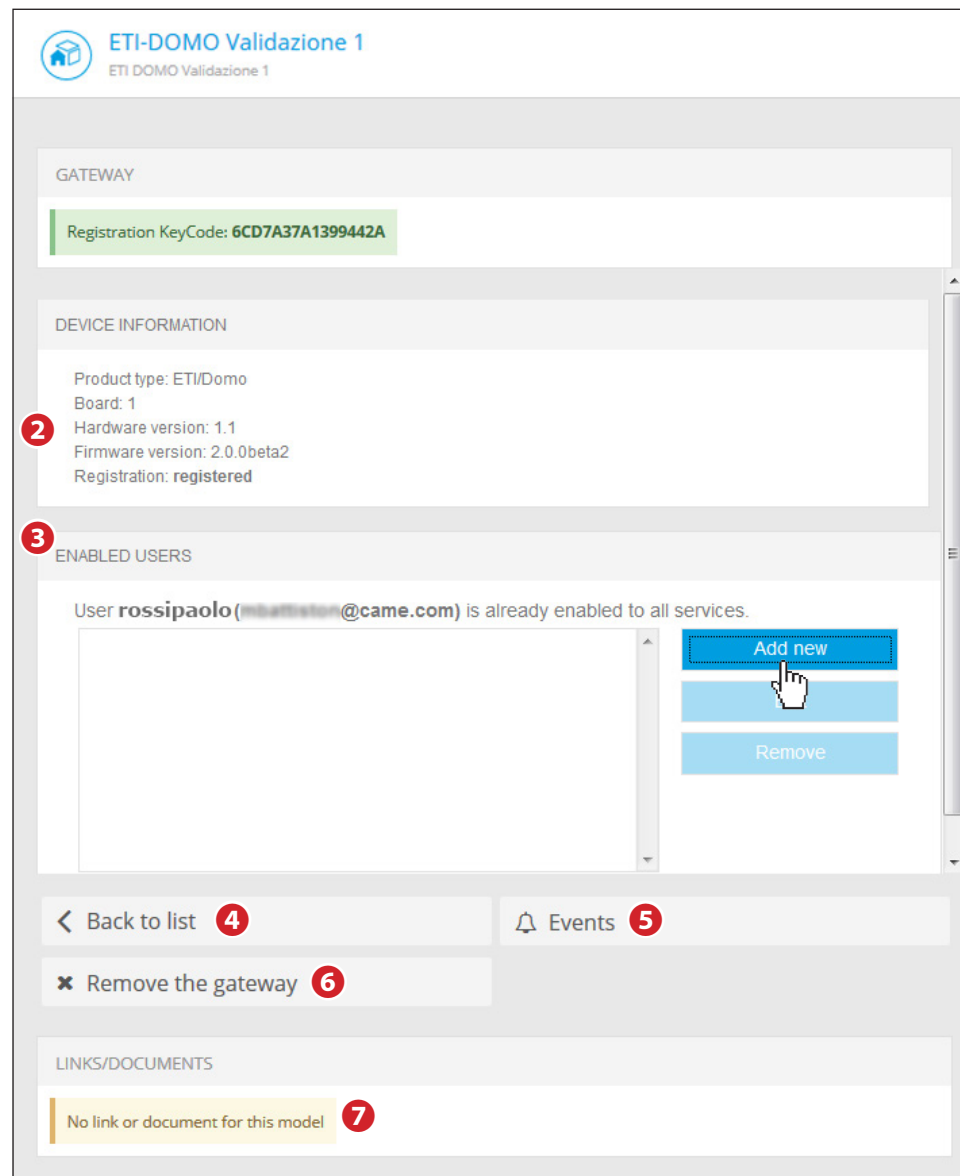
This user is automatically authorised to carry out any type of operation on the system: remote monitoring by means of the special app and reprogramming or configuration changes by means of the special software.

4 Back to the registered gateway list.

5 Provides access to a list of events that have affected the device (errors, any service outages etc...).

6 Permanently removes the device from the list of those registered.

7 This area is a place for links to external documents useful for configuring or installing the device.



Delegating device access to other users

NEW USER INVITATION

Specify the email address of a new user and the services he will have access to.
If the specified email doesn't belong to an already registered user, the new user will be invited to register on CAME Connect.

User email: **8**

SERVICES

Remote control
Enabling this service user will be able to remotely access the alarm/home automation system using Came Domotic Touch-screen, Came Domotic Mobile or Came Domotic PC.

Available profiles:

admin **9**

guest

Always valid

Valid from: until: **11**

Remote assistance
Enabling this service user will be able to remotely change the configuration of the home automation system.

Service enabled **10**

Always valid

Valid from: until: **11**

8 Enter the e-mail address of the user to whom you want to delegate system access. The user will receive an e-mail invitation to register on CAMEConnect. Once registered, the user will have access to the system with the privileges specified by the owner user.

9 Choose one of the available profiles created beforehand with the special app to match the user that you are inviting.

10 This section allows you to authorise the user to provide remote assistance to the system. The authorised user can change the configuration and even totally reprogram the system.

11 This section allows you to delegate the user to manage all specified functions remotely (via the app) for a set time or indefinitely.

It is possible to delegate user access in different ways. Generally, users actually using the system are allowed to remotely access the system for an unlimited time. Installer users or specialist technicians are allowed access for a set time, suitable to the type of intervention they need to carry out on the system.

In all cases the owner user has control over permission to access the system.

The form is only visible in the device list to the user that registered the device and not to users that have been delegated.

CAME
s a f e t y & c o m f o r t



Came S.p.A.

Via Martiri Della Libertà, 15 Via Cornia, 1/b - 1/c

31030 **Dosson di Casier - Treviso - Italy** 33079 **Sesto al Reghena - Pordenone - Italy**

📞 (+39) 0422 4940 – 📠 (+39) 0422 4941 📞 (+39) 0434 698111 – 📠 (+39) 0434 698434

www.came.com